

SecuriBeam ILIA Optical Beam Detection

Version 1.0 2024



Contents

1.	Introduction.....	3
2.	SEC-ERHS0712 ILIAOverview	5
3.	Processor Unit.....	6
4.	d-LIST Cables	7
5.	d-LIST Single Sensors	8
6.	d-LIST Accessories	9

1. Introduction



Beam Smoke Detector

Beam smoke detectors consist either of a transmitter and a receiver mounted on opposite walls. The infrared light beam from the transmitter is sent to the receiver.

Applications

The linear nature of a beam detector means that SecuriBeam can be deployed wherever conventional point detectors cannot be used due to structural issues - or when such detectors would not perform well. Examples of such applications:

- Large Warehouses
- Production halls
- Atriums & indoor courtyards
- Reception venues
- Churches
- Cinemas & Theatres

Production

All Securiton fire alarm systems, system components and detectors are developed and manufactured in Europe and in compliance with the most recent European standards, as well as representing the cutting edge of technology based upon the most up-to-date scientific knowledge.

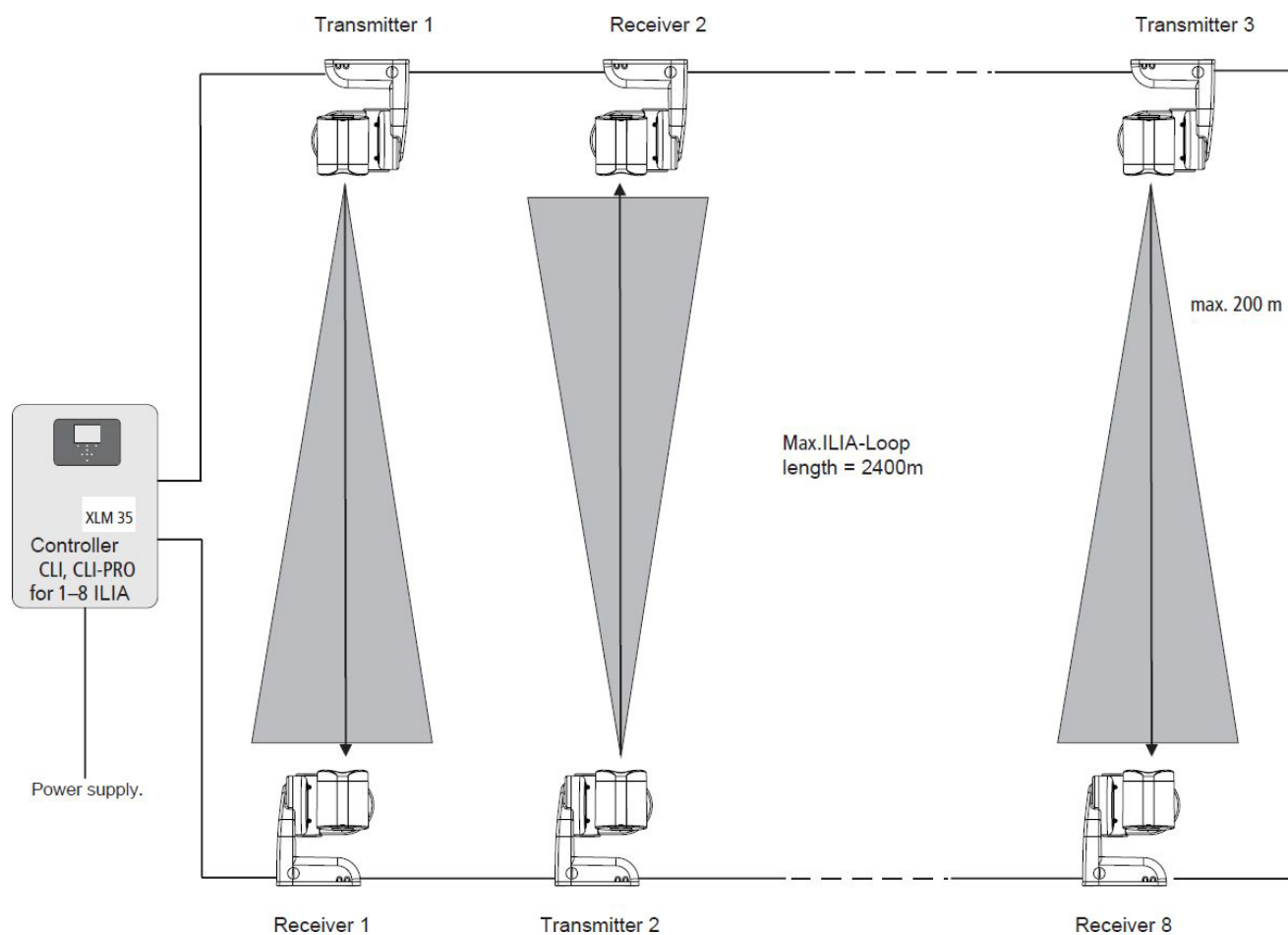
Product

The descriptions and technical data included in this catalogue are up-to-date at the time of release. We reserve the right to make alterations to them, particularly where justified by technological advancements. The illustrated products may also differ visually from the products supplied as a result of continuous further development of products.

The layout of this catalogue is subject to copyright. The copying or reuse of text, illustrations and photos in any media (e.g. print, CD-ROM, Internet, etc.) contained within this catalogue - also in an abridged form - is only allowed with our explicit written permission. We assume no liability for typographic errors and obvious mistakes. Please quote the relevant item numbers when making enquiries or placing an order.

2. System Overview

SecuriBeam ILIA



The illustrated components are examples and can be combined within the scope of the technical possibilities. The technical documentation, installation instructions and regional standards must be observed.

3. Beam Detector SEC-ERHS0712

SEC-ERHS0712 - Optical Beam Detector



SEC-ERHS0712

The transmitter / receiver system SEC-ERHS0712 is particularly suited for indoor smoke and fire detection. Thanks to the linear design with transmitter & receiver, it may be used wherever structural situations prevent the installation of conventional point detectors or where the latter can no longer guarantee optimal protection

Features:

- Evaluation of Smoke / Fire
- Operating Distance: 10 - 200 m

Technical Data:

Operating voltage:	9,6 to 32 VDC
Power consumption:	31 to 177 mA
Protection class detector:	IP65
Operating temperature:	-20°C to + 65°C
Weight:	770 g
Dimensions (HxWxD):	162 x 145 x 193 mm
Color ERHS0712:	black blue (RAL 5004)

Approvals

VdS-Approval:	G 209195
---------------	----------

SEC-CSRLS-2 - Control unit for 2 SEC-ERHS0712



SEC-CSRLS-2
 Control unit for 2 x SEC-ERHS0712 T/R systems for stub connection. All adjustment, testing and maintenance work can be simply and reliably performed on the easily accessible control unit.

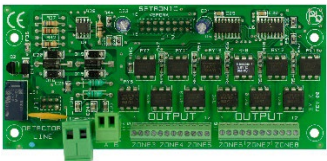
Technical Data:

Operating voltage:	9,6 to 32 VDC
Protection class:	IP65
Operating temperature:	-20°C to + 65°C
Weight of basic version:	375 g
Dimensions (HxWxD):	145 x 177 x 68 mm
Colour:	black blue (RAL 5004)

Approvals

VdS-Approval:	G 209195
---------------	----------

SEC-SMLS - Extension module for up to 6 more SEC-ERHS0712



SEC-SMLS

For SEC-ERHS0712 system:
 Control unit extension board for SEC-CSRLS-2 control unit to add **six** additional SEC-ERHS0712 detectors.

For SEC-ERHS0712-PRO system
 Control unit extension board for SEC-CSRLS-PRO control unit to add **six** additional SEC-ERHS0712-PRO detectors. When pre-signals are activated only **three** additional SEC-ERHS0712-PRO T/R can be used.

SEC-CLI-8 - Control Unit for up to 8 SEC-ERHS0712



SEC-CLI-8

Control Unit for 8 ILIA detectors as stub or ring connection.

Optional:

- Relay card SEC-CM-IB: General alarm, General fault, General maintenance, detail info for detector 1 to 2 (alarm, fault)
- Relay card SEC-CM-IE: detail info for detector 3 to 8 (alarm, fault)

Technical Data:

Operating voltage:	19.2 to 28.8VDC
Protection class detector:	IP65
Operating temperature:	-20°C to + 65°C
Weight:	2400 g
Dimensions (HxWxD):	426 x 320 x 150 mm
Color:	grey / jet black (RAL 9005)

Optional Relay Cards



Relay card SEC-CM-IB:

General pre alarm, General alarm, General fault, General maintenance, detail info for detector 1 to 2 (pre alarm, alarm, fault).



Relay card SEC-CM-IE:

Detail info for detector 3 to 8 (pre alarm, alarm, fault)
To be mounted in Control Unit SEC-CLI-8 and SEC-CLI-8-PRO

4. Beam Detector SEC-ERHS0712-PRO

SEC-ERHS0712-PRO - Dusty Environment Optical Beam Detector



SEC-ERHS0712-PRO

The transmitter receiver system SEC-ERHS0712-PRO is particularly suited to indoor smoke and fire detection in extremely dusty environments.

Technically, the PRO version has additional features compared to the standard SEC-ERHS0712.

Additional Features:

- Pre Signals
- Additional alarm levels
- Dust reject lens
- Event memory

Technical Data:

Operating voltage:	9,6 VDC - 32 VDC
Power consumption:	31 to 177 mA
Protection class detector:	IP65
Operating temperature:	-20°C to +65°C
Operating Distance:	10 - 200 m
Weight of basic version:	770 g
Dimensions (HxWxD):	162 x 145 x 193 mm
Color:	black blue (RAL 5004)

Approvals

VdS-Approval:	G 209195
---------------	----------

SEC-CSRLS-PRO - Control unit for 2 SEC-ERHS0712-PRO



SEC-CSRLS-PRO

Control unit for 2 x SEC-ERHS0712-PRO systems for stub connection. All adjustment, testing and maintenance work can be simply and reliably performed on the easily accessible control unit.

Technical Data:

Operating voltage:	9,6 to 32 VDC
Protection class:	IP65
Operating temperature:	-20°C to + 65°C
Weight of basic version:	375 g
Dimensions (HxWxD):	145 x 177 x 68 mm
Colour:	black blue (RAL 5004)

Approvals

VdS-Approval:	G 209195
---------------	----------

SEC-SMLS - Extension module for up to 6 more SEC-ERHS0712-PRO



SEC-SMLS

For SEC-ERHS0712 system:

Control unit extension board for SEC-CSRLS-2 control unit to add **six** additional SEC-ERHS0712 detectors.

For SEC-ERHS0712-PRO system

Control unit extension board for SEC-CSRLS-PRO control unit to add **six** additional SEC-ERHS0712-PRO detectors. When pre-signals are activated only **three** additional SEC-ERHS0712-PRO T/R can be used.

SEC-CLI-8-PRO - Control Unit for up to 8 SEC-ERHS0712-PRO



SEC-CLI-8-PRO
Control Unit for 8 ILIA detectors as stub or ring connection.

Optional:

- Relay card SEC-CM-IB: General alarm, General fault, General maintenance, detail info for detector 1 to 2 (alarm, fault)
- Relay card SEC-CM-IE: detail info for detector 3 to 8 (alarm, fault)

Technical Data:

Operating voltage:	19.2 to 28.8VDC
Protection class detector:	IP65
Operating temperature:	-20°C to + 65°C
Weight:	2400 g
Dimensions (HxWxD):	426 x 320 x 150 mm
Color:	grey / jet black (RAL 9005)

Optional Relay Cards



Relay card SEC-CM-IB:
General pre alarm, General alarm, General fault, General maintenance, detail info for detector 1 to 2 (pre alarm, alarm, fault).



Relay card SEC-CM-IE:
Detail info for detector 3 to 8 (pre alarm, alarm, fault)
To be mounted in Control Unit SEC-CLI-8 and SEC-CLI-8-PRO

SEC-SOHI - Protective Housing



SEC-SOHI

Protective case for extremely dusty environments.
 Additional security for permanent acid concentrations
 in the air or aggressive dust concentrations.
 Protection against misalignment during cleaning and
 Disinfection.

Technical Data:

Protection class:	IP65
Weight of basic version:	2100g
Dimensions (HxWxD):	303 x 303 x 260 mm

Accessory:

Protective pane	SEC-FAPO
-----------------	----------

SEC-ASIS - Air shield for SEC-SOHI



SEC-ASIS

SEC-SOHI can be expanded for dusty environment
 with the air shield to avoid dust deposit in front of the
 SOHI pane.

Incite Fire Sydney

☎ 1300 INCITE (1300 462 483)

🌐 www.incitefire.com.au

✉ Technical support: support@incitefire.com.au

✉ Accounts Enquiries: accounts@incitefire.com.au

NSW

✉ Sales Enquiries: sales@incitefire.com.au

VIC

✉ Sales Enquiries: salesvic@incitefire.com.au

QLD

✉ Sales Enquiries: salesqld@incitefire.com.au

WA

✉ Sales Enquiries: saleswa@incitefire.com.au